



PAKISTAN NOTICES TO MARINERS

WEEKLY EDITION 38

Notice: 119 - 120/22

24 SEP 2022

Copies of these Notices can be obtained gratis from Mercantile Marine Department and PN Chart Depot / NAVAREA IX Headquarters, 11 Liaquat Barracks Karachi. The same can be downloaded from web: hydrography.paknavy.gov.pk.

CONTENTS

- I NOTICES TO MARINERS**
- II REPRINTS OF RADIO NAVIGATIONAL WARNINGS**
- III CORRECTIONS TO SAILING DIRECTIONS**
- IV MARINE INFORMATION**

Mariners are requested to inform the Hydrographic Department, Naval Headquarters, 11 Liaquat Barracks, Karachi, Pakistan, immediately on the discovery of new dangers, or suspected dangers to navigation and of changes or defects in aids to navigation noticed in NAVAREA IX and of shortcomings in PAK charts or publications.

Tel : + 92-21-48506151
 + 92-21-48506152
Fax : + 92-21-99201623
 + 92-21-35867737

E-mail : hydropk@paknavy.gov.pk
 hydrpk@gmail.com

Web : hydrography.paknavy.gov.pk.

MUHAMMAD WASIM
Captain Pakistan Navy
Hydrographer

Hydrographic Department, Naval Headquarters, 11 Liaquat Barracks, Karachi 75530, PAKISTAN

PART – I
NOTICES TO MARINERS

119/22 BAHRAIN - NM Blocks. Wrecks. Depth.**BA Chart 2837 (INT 7017)** [*previous update 3048/22*] WGS84 DATUM

Insert	 Wk	26° 32'·0N., 50° 45'·6E.
Replace	depth, 8 ₈ , with  Wk	26° 30'·7N., 50° 45'·1E.

BA Chart 2847 (INT 7018) [*previous update 2541/22*] WGS84 DATUM

Insert	 Wk	26° 32'·0N., 50° 45'·6E.
Replace	depth, 8 ₈ , with  Wk	26° 30'·7N., 50° 45'·1E.

BA Chart 2883 (INT 7260) [*previous update 2968/22*] WGS84 DATUM

Insert	accompanying block, A, centred on:	26° 43'·7N., 50° 50'·6E.
	accompanying block, B, centred on:	28° 22'·3N., 51° 41'·8E.

BA Chart 2886 (INT 7243) [*previous update 2541/22*] WGS84 DATUM

Insert	accompanying block, A, centred on:	26° 42'·0N., 50° 51'·0E.
	accompanying block, B, centred on:	25° 18'·2N., 51° 04'·2E.

Source: Admiralty Notice to Mariners No. 3751/2022.

120/22 KUWAIT - Depths.**BA Chart 3773** [*previous update 1481/22*] WGS84 DATUM

Replace	depth, 3 ₉ , with depth, 2 ₂	28° 51'·43N., 48° 17'·01E.
---------	--	----------------------------

Source: Admiralty Notice to Mariners No. 3757/2022.

PART – II
RADIO NAVIGATIONAL WARNINGS

362/22. PAKISTAN. Karachi Approaches. Charts PAK 5 (INT 7314), 30 (INT 7315) and BA 40. Following channel buoys reported unlit:

P-6	24-45.06N 066-57.48E
P-8	24-45.60N 066-57.98E
TS-3	24-47.64N 066-59.76E

Mariners cautioned. Cancel Navarea IX warning 360 of 2022.

363/22. SOUTHERN GULF. UAE. Charts BA 2443, 2889 and 3177. Seismic survey in progress till 24 sep 22 in following areas:

Receiver Boundary

24-51.24N	053-42.53E
24-51.24N	053-47.56E
24-46.07N	053-47.56E
24-46.07N	053-42.53E

Source Boundary

24-55.55N	053-42.53E
24-55.55N	053-47.36E
24-42.81N	053-47.36E
24-42.81N	053-42.53E

Fishing, anchoring and diving operations are strictly prohibited in survey areas. Mariners are advised to navigate with caution and maintain listening watch on channels 16/72. Cancel this message on 242359 UTC Sep 22.

- 364/22. SOUTHERN GULF.** UAE. Charts BA 3174 and 3404. 02 special data buoys will be deployed to monitor sea condition and acquisition of other sea data in following positions:

Special Mark Buoy	25-59.00N 056-02.41E	Fl. Q Yellow
Special Mark Buoy	26-03.23N 056-03.62E	Fl. Q Yellow

Following buoys have been removed:

Wave Buoy	25-58.95N 056-02.70E	Fl. Yellow
Buoy R-5	25-58.95N 056-02.43E	Fl. Yellow 5second

Mariners cautioned.

- 365/22. RED SEA.** Saudi Arabia (Jeddah). BA Charts 158 and 2659. DGPS Station 961 in position 21-28.4N 039-08.9E is Off Air till further notice. Mariners cautioned.

- 366/22. PAKISTAN.** Karachi Port. Charts PAK 5 (INT 7314), 30 (INT 7315) and BA 40. Maximum Permissible draughts/dimensions for ships calling at Karachi port with immediate effect. Details are as under:

Berth/Oil Piers	Max LOA	Max Beam	Max Draft Import	Max Draft Export
OP-1 (POL Products)	259m	44m	13M	13m
OP-2 (POL Products)	259m	44m	13M	12.5m
OP-3 (POL Products)	259m	44m	12.5M	12.25m
Berth No 1,2,3	NA	NA	10.67	
Berth No 4-5	186m	NA	10.75	
Berth No 6-9 (PICT)	305m	NA	13M	
Berth No 10,11,12	250m	NA	13M	
Berth No 13-14	250m	NA	13M	
Berth No 15-17	250m	NA	10.5M	
Berth No 18-19	170m	NA	9.5M	
Berth No 20-21	200m	NA	9.5M	
Berth No 22-23	150m	NA	7.5M	
Berth No 24-25	200m	NA	10M	
Berth No 26-30 (KICT)	305m	NA	13M	
SAPT-1,2,3,4	400m	NA	16M	

There are no restriction on the beam for the general cargo vessels when the ships are working with their own gear. There are no rail served berths on east wharves. Movement at berth No.18 to 23 restricted to day light only. Vessel drawing draft of more than the sanctioned depth will not be allowed to enter the port. The above draught/ dimensions are subject to availability of sufficient tide/weather condition. Deep draft vessels are to commence discharging immediately after berthing. Ship coming for loading immediately sail at top up before 1 hour of high water. Ships on arrival at outer anchorage are to communicate correct draught and other vessels particulars. Existing harbour vessel 290 (m) LOA and above will be swing around during day light only. Vessels above 305(m) LOA will be allowed subject to intimation of ETA 07 days before arrival and prior approval of port authorities. SAPT draft subject to weather, 14m in all weather condition, 16m on top of high water only. At SAPT, being newly constructed port, vessel 335(m) LOA and above on arrival will be handled with an additional pilot for safety. For SAPT-1 and 2, two pilots will be mandatory during arrival time irrespective of length and draft. Port existing parameters can be obtained from port website. Cancel this message on 15 March 2023.

- 367/22. PAKISTAN.** Karachi Approaches. Charts PAK 5 (INT 7314), 30 (INT 7315) and BA 40. Following channel buoys reported unlit:

P-6	24-45.06N 066-57.48E
P-8	24-45.60N 066-57.98E

Mariners cautioned. Cancel Navarea IX warning 362 of 2022.

- 368/22. CENTRAL GULF.** Qatar. Charts BA 2523, 2837 and 2886. Environmental seabed survey in progress by vessel Halul-49 (sampling through ROV) in following positions:

26-26.77N 051-56.03E
 26-26.92N 051-58.22E
 26-26.77N 052-00.02E
 26-33.86N 051-59.23E
 26-35.61N 051-51.29E
 26-37.10N 051-55.81E
 26-37.95N 051-57.05E
 26-38.44N 051-56.28E
 26-42.64N 051-53.42E
 26-46.60N 051-54.53E
 26-33.32N 051-50.30E
 26-40.22N 051-57.13E

26-35.59N 052-00.29E
 26-38.37N 051-56.82E
 26-38.43N 051-56.72E
 26-38.36N 051-56.67E

Mariners are requested to navigate with caution and give wide berth.

369/22. CENTRAL GULF. Qatar. Charts BA 2523, 2837 and 2886. Rig energy enticer being moved by vessels Lanpan 31, Lanpan 32 and Lanpan 35 from 26-33.63N 052-10.43E to 26-19.57N, 052-07.15E. Mariners are requested to navigate with caution and give wide berth. Cancel this message on 242359 Sep 22.

370/22. SELF CANCELLING. Mooring buoy restored to normal. Cancel Navarea IX warning 353 of 2022.

371/22. NORTHERN GULF. Kuwait. Charts BA 1223, 2884 and 3773. Pipeline (310 meter long) will be towed on 23 Sep 22 by vessels barge GD-250, Tug GD-20, Tug Heisco-19, Anchor Boat GD-85 and Barge Heisco-180 from 28-41.788N, 048-22.769E to 28-53.903N, 048-14.111E. Mariners are requested to navigate with caution. Cancel this message on 242359 Sep 22.

372/22. SELF CANCELLING. Survey operation completed. Cancel Navarea IX warning 226 of 2022.

373/22. ARABIAN SEA. India West Coast. Charts PAK 57 (INT 751), BA 707 and 4705. Aircraft firing scheduled on 24 Sep 22 from 0430 to 0630 UTC in danger area bounded by following coordinates:

21-36.00N 066-49.50E
 21-55.83N 067-14.50E
 21-40.00N 067-41.50E
 21-20.16N 067-17.33E

Mariners cautioned. Cancel this message on 240730 UTC Sep 22.

374/22 SELF CANCELLING. Navigational Warnings Inforce:

2021 series: 024, 086, 109, 223, 224, 292, 397, 398, 399, 408, 445, 448, 490 and 491.

2022 series: 021, 027, 039, 067, 080, 095, 102, 112, 142, 144, 180, 185, 193, 198, 207, 211, 218, 220, 227, 257, 281, 294, 295, 296, 304, 309, 310, 311, 313, 314, 319, 320, 325, 327, 328, 329, 331, 332, 356, 357, 358, 359, 363, 364, 365, 366, 367, 368, 369, 371 and 373.

COASTAL WARNING

095/22. PAKISTAN. Karachi Approaches. Charts PAK 5 (INT 7314), 30 (INT 7315) and BA 40. Following channel buoys reported unlit:

P-6 24-45.06N 066-57.48E
 P-8 24-45.60N 066-57.98E
 TS-3 24-47.64N 066-59.76E

Mariners cautioned. Cancel Navarea IX warning 360 of 2022.

096/22. PAKISTAN. Karachi Port. Charts PAK 5 (INT 7314), 30 (INT 7315) and BA 40. Maximum Permissible draughts/dimensions for ships calling at Karachi port with immediate effect. Details are as under:

Berth/Oil Piers	Max LOA	Max Beam	Max Draft Import	Max Draft Export
OP-1 (POL Products)	259m	44m	13M	13m
OP-2 (POL Products)	259m	44m	13M	12.5m
OP-3 (POL Products)	259m	44m	12.5M	12.25m
Berth No 1,2,3	NA	NA	10.67	
Berth No 4-5	186m	NA	10.75	
Berth No 6-9 (PICT)	305m	NA	13M	
Berth No 10,11,12	250m	NA	13M	
Berth No 13-14	250m	NA	13M	
Berth No 15-17	250m	NA	10.5M	
Berth No 18-19	170m	NA	9.5M	
Berth No 20-21	200m	NA	9.5M	
Berth No 22-23	150m	NA	7.5M	
Berth No 24-25	200m	NA	10M	
Berth No 26-30 (KICT)	305m	NA	13M	
SAPT-1,2,3,4	400m	NA	16M	

There are no restriction on the beam for the general cargo vessels when the ships are working with their own gear. There are no rail served berths on east wharves. Movement at berth No.18 to 23 restricted to day light only. Vessel drawing draft of more than the sanctioned depth will not be allowed to enter the port. The above draught/ dimensions are subject to availability of sufficient tide/weather condition. Deep draft vessels are to commence discharging immediately after berthing. Ship coming for loading immediately sail at top up before 1 hour of high water. Ships on arrival at outer anchorage are to communicate correct

draught and other vessels particulars. Existing harbour vessel 290 (m) LOA and above will be swing around during day light only. Vessels above 305(m) LOA will be allowed subject to intimation of ETA 07 days before arrival and prior approval of port authorities. SAPT draft subject to weather, 14m in all weather condition, 16m on top of high water only. At SAPT, being newly constructed port, vessel 335(m) LOA and above on arrival will be handled with an additional pilot for safety. For SAPT-1 and 2, two pilots will be mandatory during arrival time irrespective of length and draft. Port existing parameters can be obtained from port website. Cancel this message on 15 March 2023.

097/22. PAKISTAN. Karachi Approaches. Charts PAK 5 (INT 7314), 30 (INT 7315) and BA 40. Following channel buoys reported unlit:

P-6 24-45.06N 066-57.48E
P-8 24-45.60N 066-57.98E

Mariners cautioned. Cancel Navarea IX warning 362 of 2022.

098/22. SELF CANCELLING. Navigational Warnings Inforce:

2020 Series: 143.
2021 Series: 136.
2022 Series: 024, 027, 053, 060, 063, 080, 081, 082, 096 and 097.

WPGs Inforced 2022: 26
WPGs Cancelled 2022: Nil

PART – III

CORRECTIONS TO SAILING DIRECTIONS

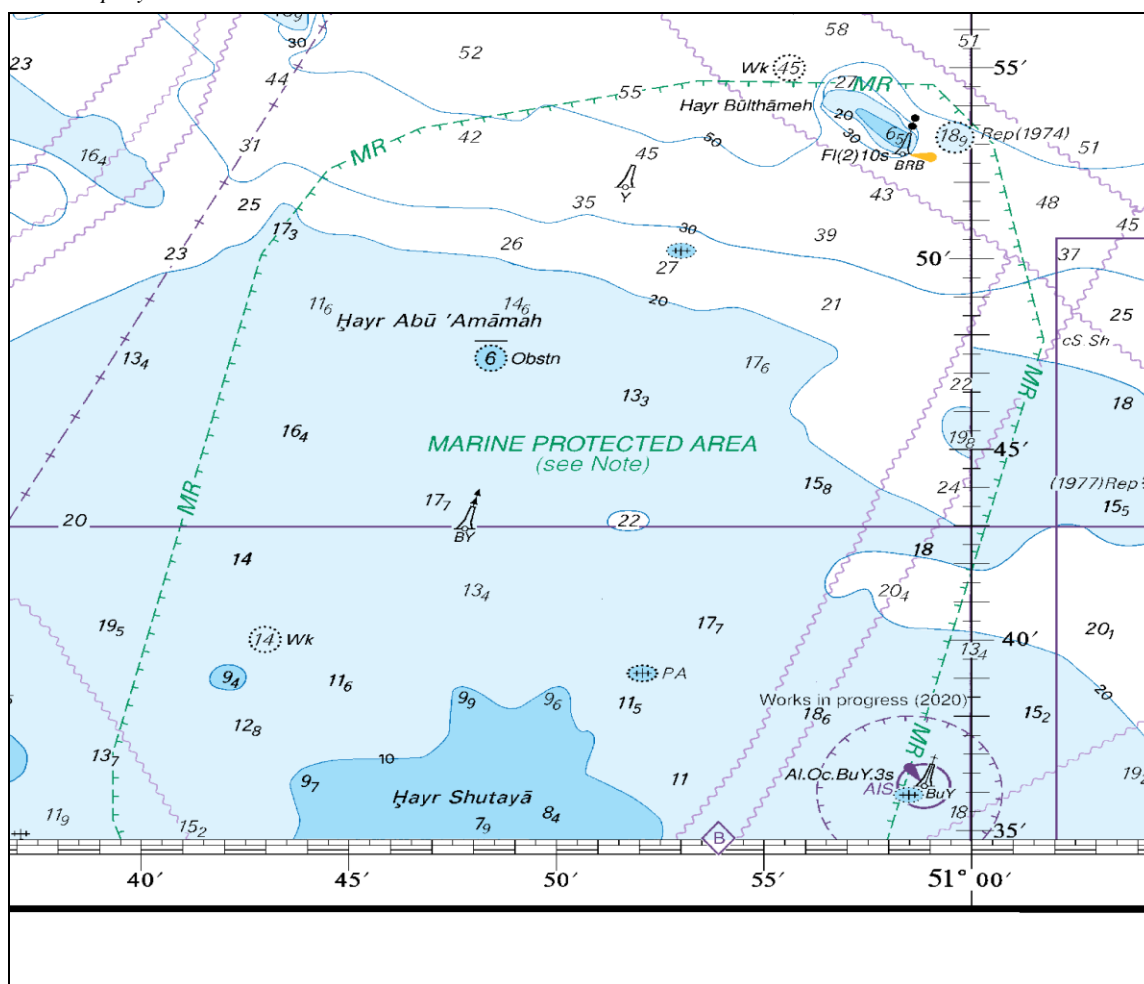
Nil

PART – IV

MARINE INFORMATION

Nil

To accompany Pakistan Notice to Mariners 119/22.



Block A for BA Chart No. 2883

To accompany Pakistan Notice to Mariners 119/22.

CHART ACCURACY

Owing to the age and quality of the source information, some detail on this chart may not be positioned accurately. Particular caution is advised when navigating in the vicinity of dangers, even when using an electronic positioning system such as GPS.

OIL AND GAS FIELDS

Within the areas covered by larger scale charts, certain fixed structures, pipelines and cables have been omitted due to their complexity and frequent change. The appropriate larger scale charts should be used in these areas.

Production platforms and associated structures, including tanker moorings, storage tankers and platforms on pipelines, generally exhibit Mo(U) lights, aircraft obstruction lights, and audible fog signals. Unauthorised navigation is prohibited within 500 metres of all such structures.

Additionally, and in accordance with Saudi Ports Authority Notices to Mariners, the majority of oilfield features have been omitted from this chart within Saudi Arabian waters.

WELLHEAD AREA

(28°11'N 49°58'E)

Submerged wellheads exist in the area indicated on this chart. Marines are advised that depths over these structures vary considerably.

OIL AND GAS ACTIVITY

Numerous structures, surface and submerged, sometimes marked by buoys, exist in the area of this chart. These features are not all charted as full details are unavailable.

MARINE PROTECTED AREA

(26°45'·0N 50°50'·7E)

To protect marine habitats and life, extensive regulations relating to fishing, anchoring and other marine activities exist within the area. Transit through this area is permitted. For further details see Admiralty Sailing Directions.

SUBMARINE CABLES AND PIPELINES

Mariners are advised not to anchor or trawl in the vicinity of submarine cables and pipelines. Pipelines are not always buried and their presence may significantly reduce the charted depth. They may also span seabed undulations and cause fishing gear to become irrecoverably snagged, putting a vessel in severe danger.

VESSEL REPORTING

For details of the Ra's Tannūrah and Ra's al Ju'aymah Vessel Traffic Service, see ADMIRALTY List of Radio Signals.

RESTRICTED AREAS

The Saudi Ports Authority advises mariners that only authorised vessels are permitted to enter the Restricted Areas on this chart.

RESTRICTED OILFIELD AREAS

The Saudi Ports Authority advises mariners not to enter the Restricted Oilfield Areas on this chart.

AUTOMATIC IDENTIFICATION SYSTEMS

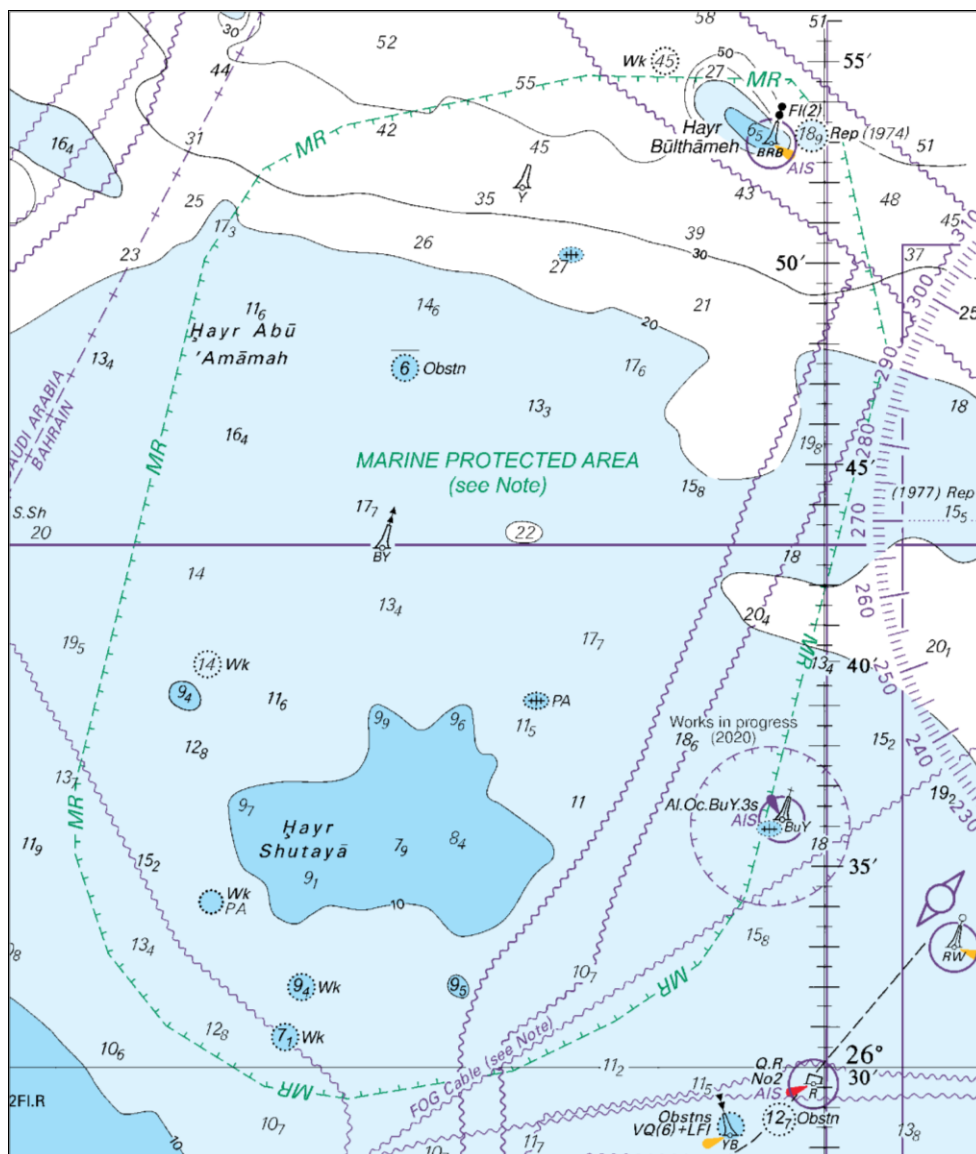
AIS transmitters on aids to navigation are not shown on this chart. V-AIS will be shown. For details, see ADMIRALTY List of Radio Signals.

DEPICTION OF CABLES

For reasons of clarity, cables on this chart are shown in a lighter print than normal.

Block B for BA Chart No. 2883

To accompany Pakistan Notice to Mariners 119/22.



Block A for BA Chart No. 2886

To accompany Pakistan Notice to Mariners 119/22.

<p>MARINE PROTECTED AREA (26°43'·0N 50°50'·0E)</p> <p>To protect marine habitats and life, extensive regulations relating to fishing, anchoring and other marine activities exist within the area. Transit through this area is permitted. For further details see Admiralty Sailing Directions.</p>	<p>Depths are in metres and are reduced to Chart Datum, which is approximately the level of Lowest Astronomical Tide.</p> <p>Heights are in metres. Underlined figures are drying heights above Chart Datum. Vertical clearance heights are above Highest Astronomical Tide. All other heights are above Mean High Water Springs or Mean Higher High Water.</p> <p>Positions are referred to WGS84 Datum.</p> <p>Navigational marks: IALA Maritime Buoyage System – Region A (Red to port).</p> <p>Projection: Mercator.</p> <p>Sources: The origin, scale, date and limits of the hydrographic surveys used in compiling the chart are shown in the Source Diagram. Later information has also been included.</p>
---	--

Block B for BA Chart No. 2886

NP77, Vol D Edition 2022. Weekly Edition No. 38, Dated 22 September 2022.
Last Updates: Weekly Edition No. 37, dated 15 September 2022.

D3889-1	LEKKI - Lekki Deep Sea Port. Southwest Breakwater. LB2	6 24-88 N 4 00-68 E	Iso R 4s	16	5
*	*	*	*	*	*	*	*
D3889-2	- Lekki Deep Sea Port. East Breakwater. LB3	6 25-26 N 4 00-58 E	Fl G 2s	7	5
*	*	*	*	*	*	*	*
D3889-3	- Lekki Deep Sea Port. East Breakwater. LB1	6 25-16 N 4 00-71 E	Iso G 4s	12	5
*	*	*	*	*	*	*	*